



Contracting & Sourcing Issues/Challenges  
by  
NAVSUP Fleet Logistics Center Yokosuka  
(FLCY)  
海軍補給システム本部横須賀艦隊補給センター

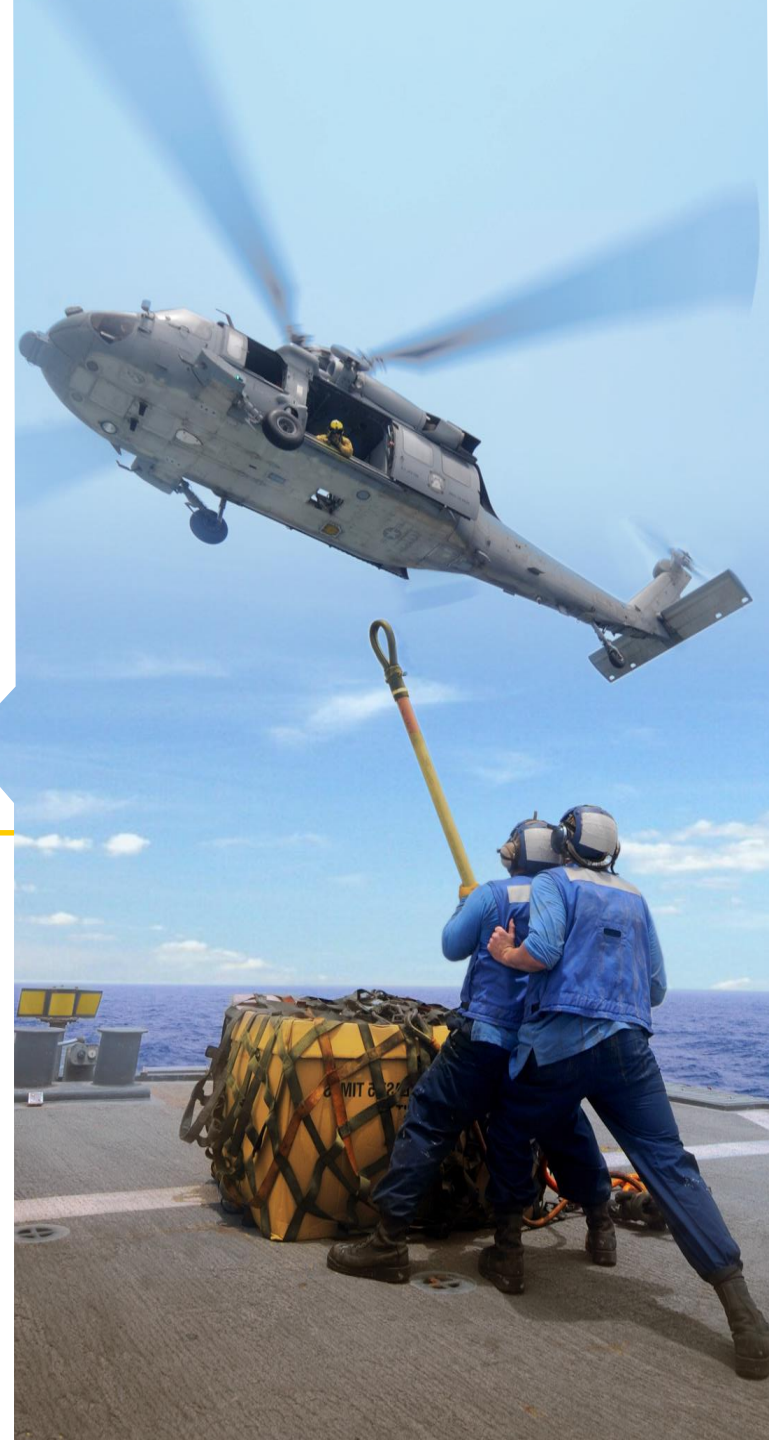
*Presented by:*

FUSAKO OGURI 小栗房子

CHIE KOSUGE 小菅智恵

17 April 2019

**READY. RESOURCEFUL. RESPONSIVE.**

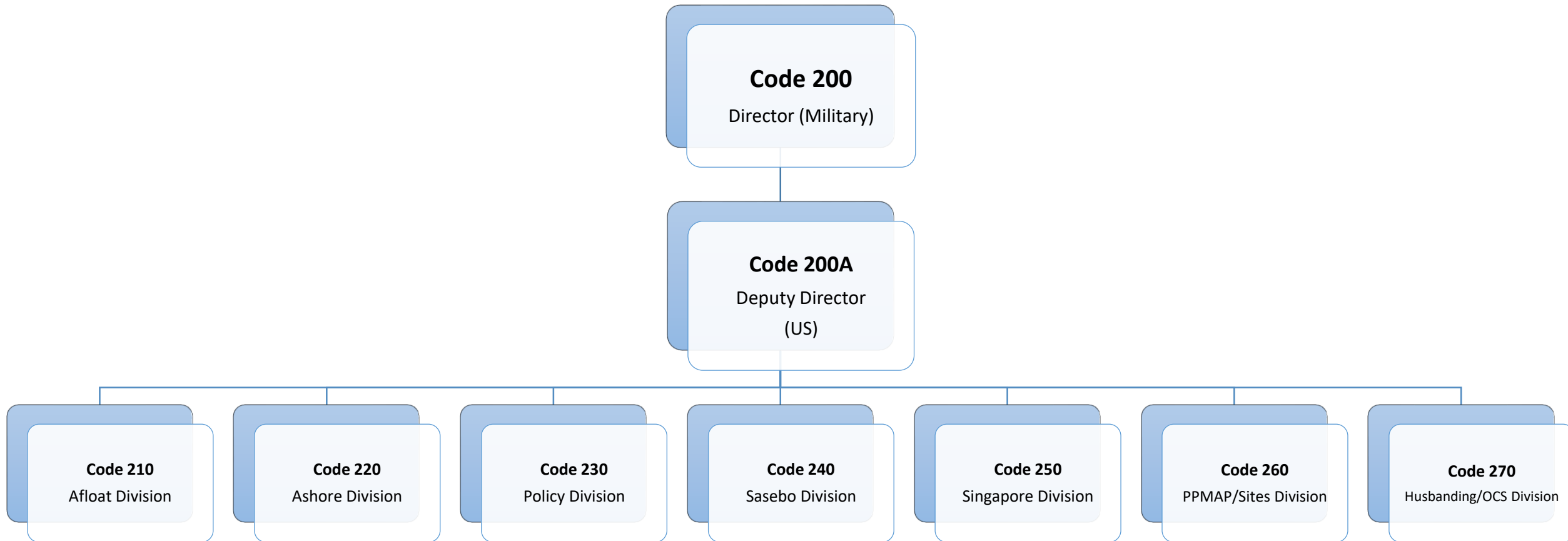


## Agenda 目次

- Contracting Organization 契約部組織図
- Support 業務内容
  - Husbanding 船舶出入港業務
  - Ship Repair 船舶修理
  - Aircraft Repair 航空機修理
  - Large Contracts 大口契約
  - Simplified Acquisitions (SAP) 簡易契約
- Issues / Challenges 問題点



## Contracting Organization 契約部組織図



## NAVSUP FLC Yokosuka Area of Responsibility (AOR) 業務エリア





## Support: Husbanding – INDOPACOM AREA OF OPERATION (AOO) MACs 船舶出入港業務 地域別エリア

- Awarded 23 Multiple Award Contracts (MACs)
- 30 April 2023: Ordering Period Expiration

Region 1	Region 2	Region 3	Region 4
Japan	South Korea	Russia, China, Taiwan	Philippines, Palau, Fiji, French Polynesia, Kiribati, Marshall Islands, Micronesia, Nauru, New Caledonia, Papua New Guinea, Solomon Islands, Tonga, Tuvalu, Vanuatu, Western Samoa
Region 5	Region 6	Region 7	Region 8
Singapore	Australia, East Timor, Antarctica, New Zealand	Thailand (Gulf of Thailand), Cambodia, Vietnam, Malaysia (S. China Sea Ports and E. Malaysia), Brunei	India, Bangladesh, Myanmar (Burma), Sri Lanka, Maldives, Malaysia (Andaman Sea Ports), Indonesia, Thailand (Andaman Sea Ports)

## Support: Ship Repair 船舶修理

### ■Customers 主な顧客

- Ship Repair Facility (SRF) 米海軍横須賀基地艦船修理廠
- US Army 在日米陸軍
- CFAY 在日米海軍横須賀基地司令部

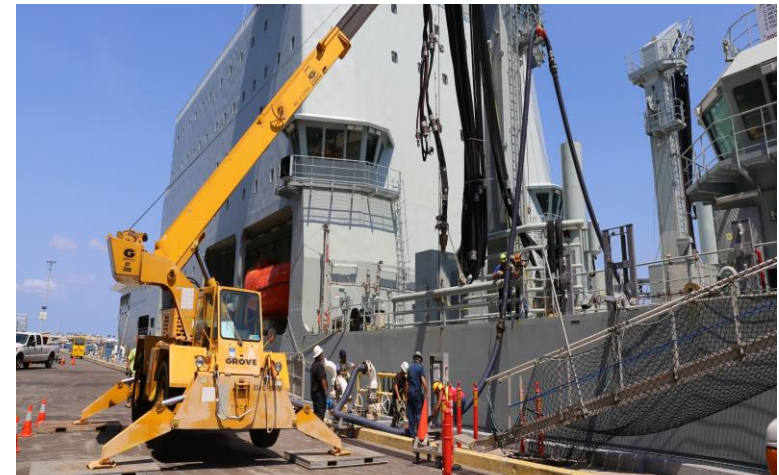
### ■Ships 主な船舶の種類

- USS Ronald Reagan
- DDG, CG, LCC
- LCU, LCM
- Beaver Boat, Barge, Shuttle Boat



## Support: Ship Repair (Cont.)

- SRF Support
  - Selected Restricted Availabilities (SRAs)
  - Extended Dry-docking Selected Restricted Availability (EDSRA)
  - Tank, bilge, and void repair for the DDGs and CGs
- US Army
  - Regular Overhauls for LCU, LCM
- CFAY
  - Regular Overhauls for beaver boat, barge, shuttle boat



## Support: Ship Repair (Cont.)



### Off Base Capacity Expansion Initiative (OBCEI)

#### 基地外修理

- Expand SRF capacity by utilizing off base contractor facilities for USS ship repair
- Contracting for repair work and all necessary logistics support
- Initial Cases – Tokyo Bay Region
  - USS MILIUS
  - YRB-30



■ Aircraft Maintenance

- H-60 Maintenance and Repair Services
- F/A-18 On-site Maintenance, Repair and Overhaul Services
- H-1 On-site Maintenance, Repair and Overhaul Services
- H-53 Maintenance, Repair and Overhaul Services
- C-130 Maintenance, Repair and Overhaul Services
- V-22 Maintenance, Repair and Overhaul Services



### ■Customers 主な顧客

- Ship Repair Facility (SRF) 米海軍横須賀基地艦船修理廠
- Puget Sound Naval Shipyard ピュージェットサウンド海軍造船所
- Commander Navy Region Japan (CNRJ) 在日米海軍司令部
- Commander Fleet Activities (CFA) Yokosuka/Sasebo/Okinawa 横須賀・佐世保・沖縄基地司令部
- Naval Air Facilities (NAF) Atsugi/Misawa 厚木・三沢海軍航空隊
- U.S. Naval Hospital (USNH) Yokosuka/Okinawa 横須賀・沖縄海軍病院
- Navy Facilities Command Far East (NAVFAC FE) 極東海軍施設部隊
- Space and Naval Warfare Systems Command (SPAWAR) スペース&海上戦システム司令部
- USN Ships (CVN, LCC, DDGs, CGs, etc.) その他艦船（艦船修理以外の契約）

## Support: Large Contracts 大口契約

- Lodging Services (IDIQ MACs for Puget Sound Naval Shipyard (PSNS)) 出張者向け宿泊契約
  - Renewed in the beginning of FY19 and currently in the base year.
  
- Japan4 Services Contract 派遣職員契約
  - Current contract expires on 31 Jul 2020
  - Follow-on acquisition in process
  - Customers include: SRF, USNH Yokosuka/Okinawa, NAVSUP FLCY, PSNS, ATG, NAVFAC etc.
  
- Oily Wastewater Treatment Barge 排油污水处理バージ契約
  - Single-award IDTC expired in Feb 19, currently new acquisition in process
  - Customers: Ships, Submarines, SRF and CFAY Port Operations

## Support: Simplified Acquisition Procedure (SAP) 簡易契約

### ■Supplies 物品

- General commodities (e.g. appliances, furniture, software, etc.)
- Industrial materials (e.g. hardware, parts, gases, reagents, etc.)
- Other: Fabrication of dry-dock/pier-side support materials (e.g. keel blocks, pontoons, brows etc.)

### ■Services サービス

- Repair, maintenance and overhaul of equipment
- Rental and lease of equipment
- Port operation support (e.g. tugboat, pilotage, launch boat, etc.)
- Other administrative support (e.g. training, advertisement, conference, etc.)



## Issues / Challenges 問題点

- New Ships in the Area of Responsibility 日本を拠点とする艦船の増加
  - One (10 CG, Two (2) DDGs, One (1) LHD
- 24/7 HSP/Ship repair coverage 24時間体制での船舶修理
- ABR/MSRA certification for Ship Repair 船舶修理業者の認可制度
- NDI/Welding certification to meet NAVSEA Standard Item 非破壊検査および溶接資格
- Wide Area Work Flow (WAWF) implementation and Payment issues 支払いシステム
- AsiaNECO 入札揭示サイト
- System for Award Management (SAM) registration and update 登録システム

Questions?

